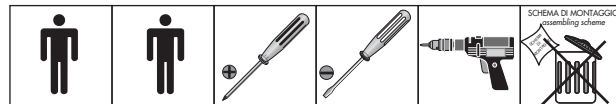
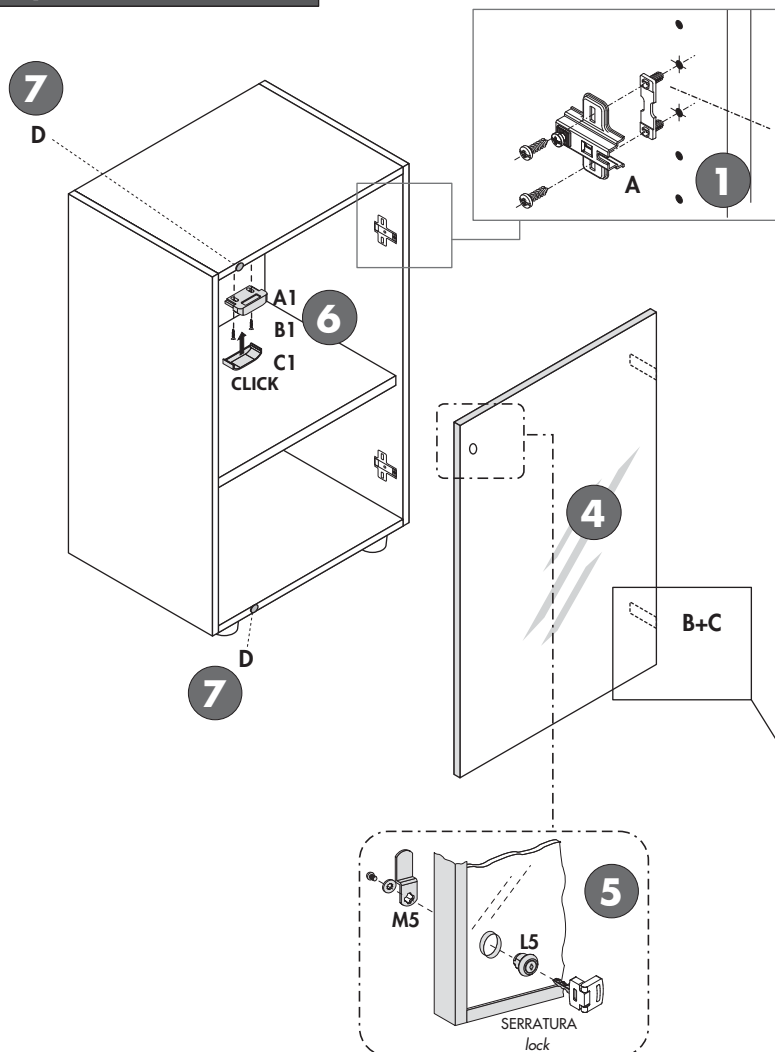


IULIO[®] HG
SCHEMA DI MONTAGGIO/assembling scheme
 ANTE VETRO RETROLACCATE
rear-lacquered glass doors

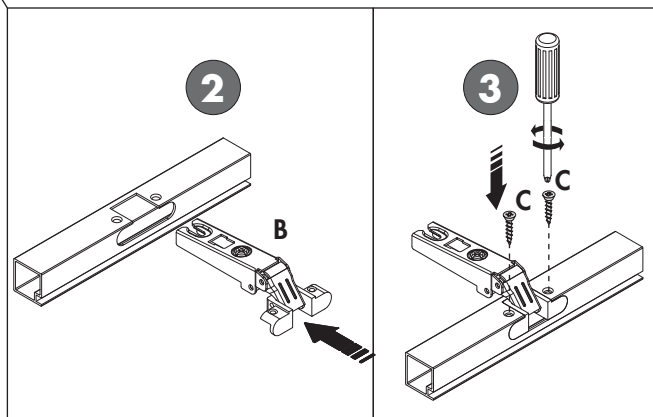
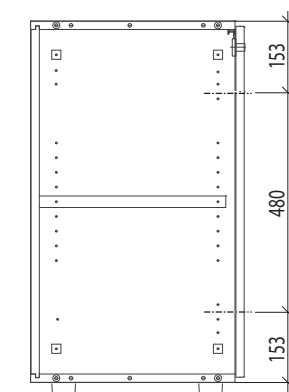

CODICE code	777 700 761
DISEGNO drawing	SM 61006
DATA date	07-01-2016
PAGINA page	1/2

CODE	COLOUR	CODE	COLOUR	CODE	Ø x L	COLOUR	CODE	COLOUR	CODE	COLOUR	CODE	Ø x L	COLOUR	CODE	COLOUR	CODE	COLOUR	CODE	COLOUR
507051019	NICKEL	507063719	NICKEL	506944508	3,5 x 13	NICKEL	505131599	NEUTRO	404400419	ARGENTO	506940309	3,5 x 15	ZINCATA	404400519	ARGENTO	507125111	NERO - black	507101609	ZINCATA
			nickel					neutral shade		silver			1/8" x 9/16" - Zinc Plated		silver		BIANCO - white		Zinc Plated
	A		B		TSPX-PZ DIN 7982	C		D		A1		B1			C1		L5		M5
								x 2		x 1		x 2			x 1		x 1		x 1

**N.B. PER IL MONTAGGIO
SEGUIRE LE FASI NUMERATE**
assemble following the numbered phases

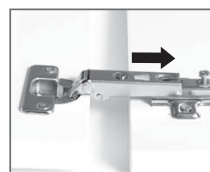
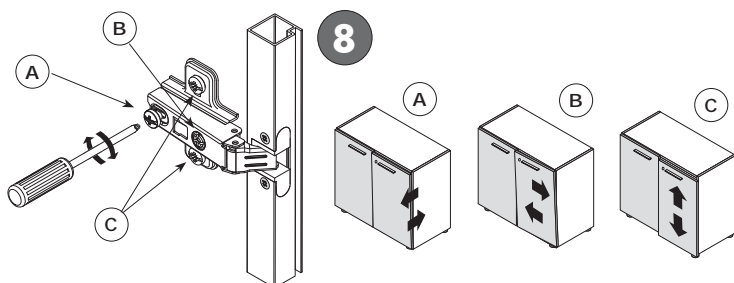

FASI / phases 1-2-3-4-5-6-7-8


**MONTAGGIO BASETTE
PER CERNIERE**
 base plates for hinges

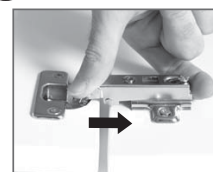


**Montaggio ante
Assembling doors**

4

REGOLAZIONE ANTE / adjusting doors


4a Posizionare la parte anteriore della cerniera nella parte anteriore della basetta.
Place the rear part of the hinge on the front side of the mounting plate.



4b Far scivolare la cerniera sulla basetta fino all'arresto.
Let the hinge slide on the mounting plate until it stops.



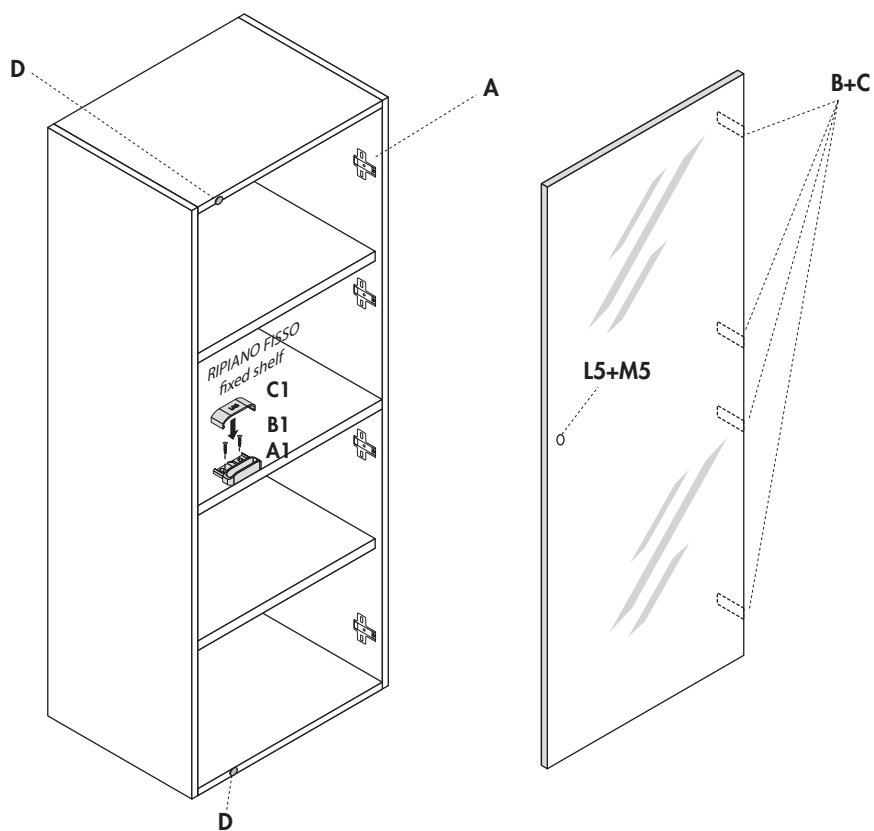
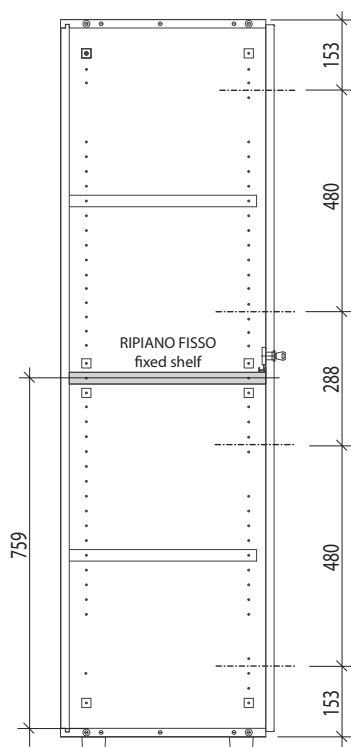
4c Fissare la vite di connessione.
Tighten the connecting screw.

SEGUIE
assembling in the following page



MONTAGGIO BASETTE
PER CERNIERE
base plates for hinges

1



MONTAGGIO BASETTE
PER CERNIERE
base plates for hinges

1

