

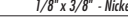







SCHEMA DI MONTAGGIO/assembling scheme
ANTE VETRO RETROLACCATE
rear-lacquered glass doors



CODICE
code **777 700 691**
 DISEGNO
drawing **SM 56018**
 DATA
date **13-11-2013**
 PAGINA
page **1/2**

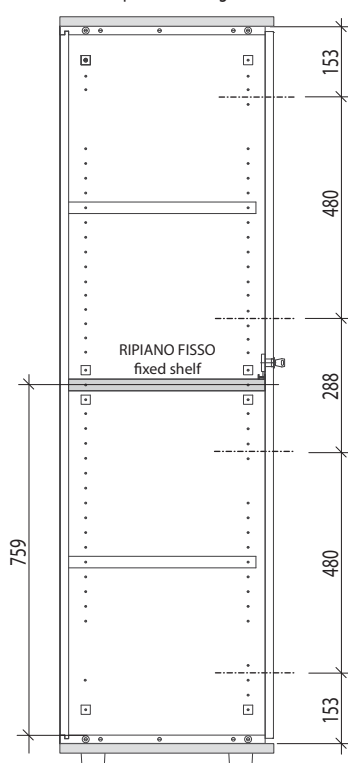
INDICE DI REVISIONE N°
last revision no **1**
 DATA REVISIONE
last date **23/02/2015**

CODE	COLOUR	CODE	COLOUR	CODE	Ø x L	COLOUR	CODE	COLOUR	CODE	Ø x L	COLOUR	CODE	COLOUR	CODE	COLOUR	CODE	COLOUR	
507051019	NICKEL	507063719	NICKEL	506481719	3,9 x 9,5	NICKEL	505131599	NEUTRO	404400419	ARGENTO	506940309	3,5 x 15	ZINCATA	404400519	ARGENTO	507123119	NICKEL	
		nickel		1/8" x 3/8" - Nickel				neutral shade		silver		1/8" x 9/16" - Zinc Plated		silver		nickel	507101609	ZINCATA
																		
A		B		C			D		A1		B1			C1		L5	M5	

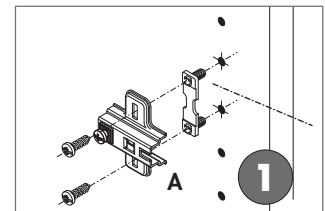
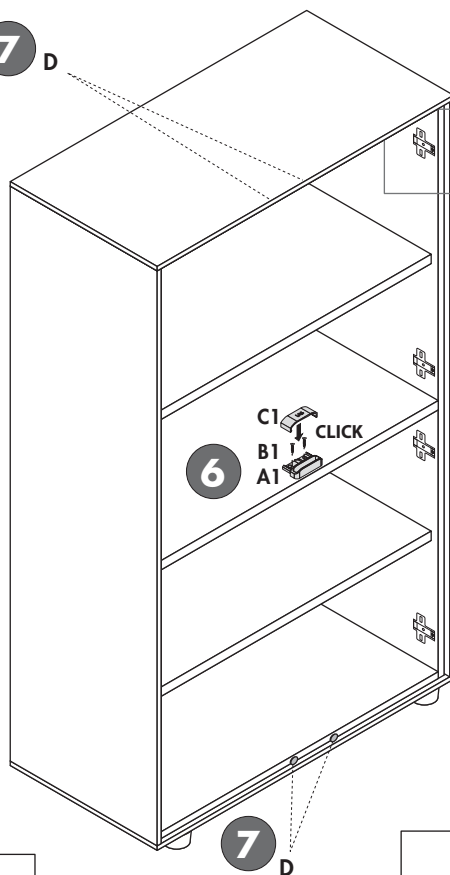
**N.B. PER IL MONTAGGIO
 SEGUIRE LE FASI NUMERATE**
assemble following the numbered phases

FASI / phases 1-2-3-4-5-6-7-8

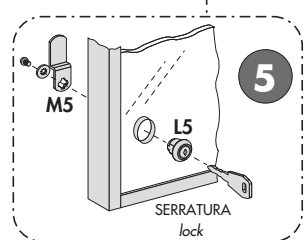
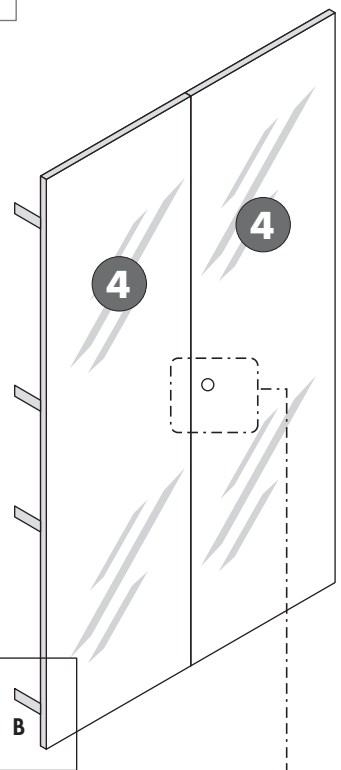
**MONTAGGIO BASETTE
 PER CERNIERE**
base plates for hinges



7 D

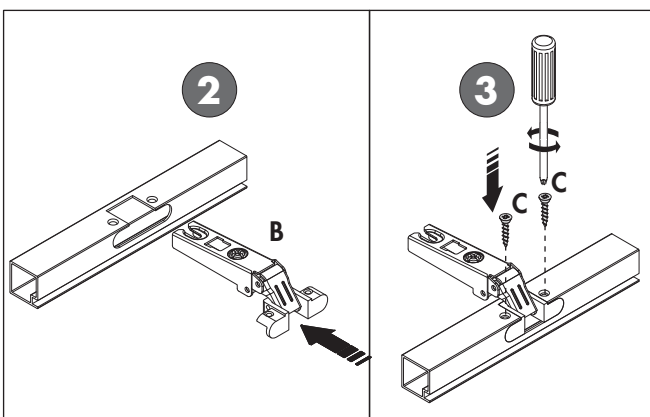


4



5

SERRATURA
lock

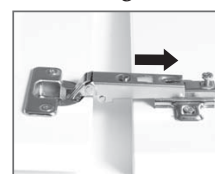


2

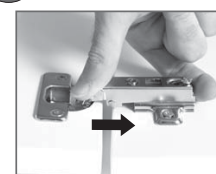
3

**Montaggio ante
 Assembling doors**

4



4a Posizionare la parte anteriore della cerniera nella parte anteriore della basetta.
Place the rear part of the hinge on the front side of the mounting plate.



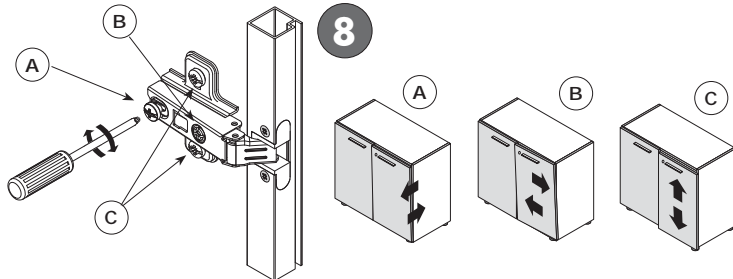
4b Far scivolare la cerniera sulla basetta fino all'arresto.
Let the hinge slide on the mounting plate until it stops.



4c Fissare la vite di connessione.
Tighten the connecting screw.

REGOLAZIONE ANTE / adjusting doors

8

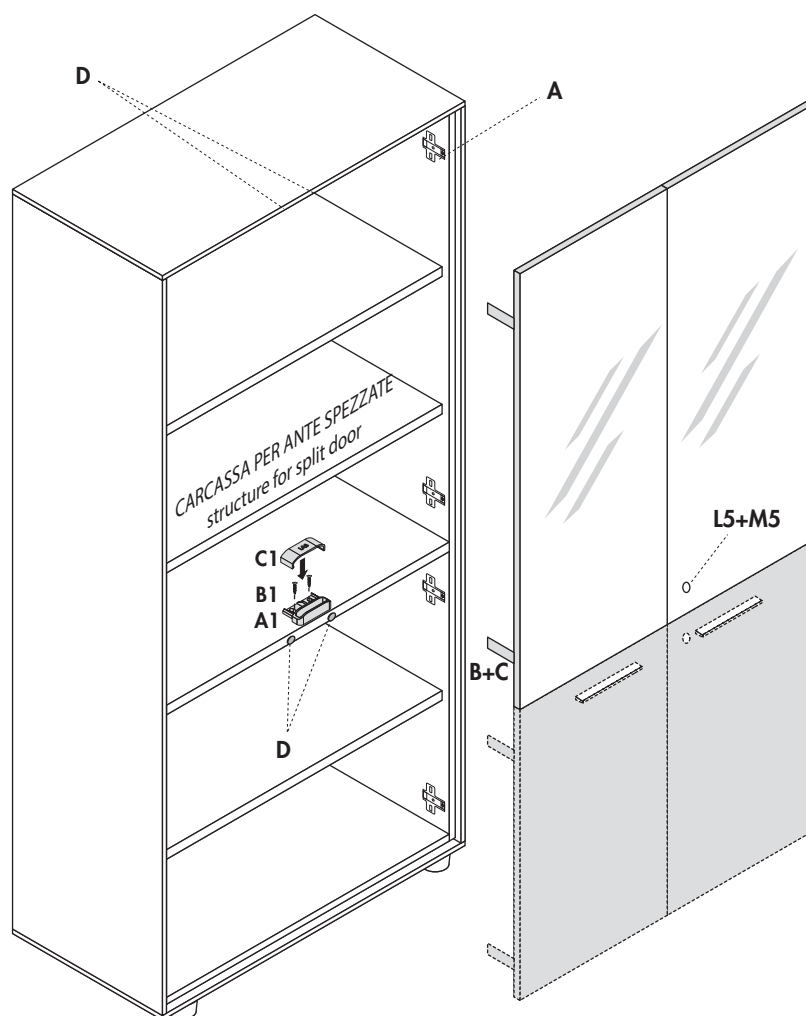
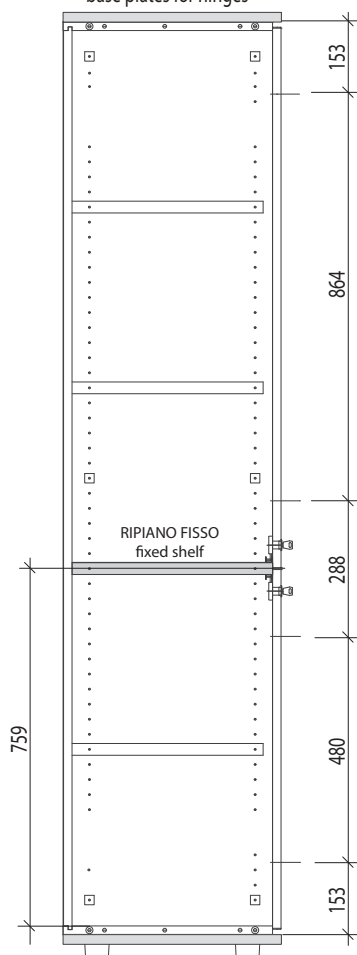


SEQUE
assembling in the following page



MONTAGGIO BASETTE
PER CERNIERE
base plates for hinges

1



MONTAGGIO BASETTE
PER CERNIERE
base plates for hinges

1

