

# Mutina

## Azulej by Patricia Urquiola



**EN**

General information  
Laying and maintenance tips  
Colors  
Technical features  
Packing

## General information

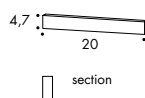
collection	Azulej
design	Patricia Urquiola, 2012
production	Industrial
material	Rectified porcelain stoneware with digital printing glazing
thickness	10 mm
nominal sizes	20.20 cm (8".8")
specification	<ul style="list-style-type: none"> <li>– 3 base colors: Bianco, Grigio, Nero.</li> <li>– 27 registered graphic patterns.</li> <li>– All the 27 different patterns are created to compose a combination, not individually on sale.</li> <li>– 9 individual patterns for each base color have been selected to be individually used.</li> <li>– Digital printing technology with 4 different textures layers on the tile's surface.</li> </ul>
complementary pieces	Skirting
awards	Wallpaper Design Award 2013, Interior Innovation Award 2014
category	UNI EN 14411 App G (BIA group) GL



20.20 cm  
8".8"

complementary pieces

skirting  
4,7.20 cm  
2".8"



## Laying and maintenance tips

use	Floor, wall – indoor, outdoor.
installation	For an even, smooth shading effect when laying, alternate material from several different boxes.
recommended adhesive	Adhesive for porcelain stoneware.
recommended joints	2mm joints. Use wedges to fix the caliber differences in work size between tiles.
recommended fillers	Cement-based grout/epoxy grout.
cleaning at the end of installation	<p>CEMENT-BASED GROUT: Buffered acid (e.g. DETERDEK PRO by FILA, or similar). Wet the floor with water, dilute the product 1:5 with water and pour it on the floor. Wait for 2 or 3 minutes then use a white scotch brite pad and rinse well with clean water.</p> <p>EPOXY GROUT: Alkaline detergent (e.g. FILA CR10 by FILA). FILA CR10: apply pure, wait for 30 minutes then use a green scotch brite pad.</p> <p>SILICONE: Solvent for silicone (e.g. FILA ZERO SIL.). Pour it straight onto the stain, wait for 20 minutes and remove the mark using scotch brite.</p> <p>PAINT: Can usually be removed using water, but if resin-based paints or particular enamels have been used, it is best to ask the manufacturer which solvent is most suitable.</p> <p>RUST: stain remover es. FILA NO RUST. Apply the product onto the stain, leave for 15 minutes, remove the residue and rinse thoroughly.</p>
general cleaning (installed tiles)	<p>You are recommended to use ordinary neutral detergent diluted in water. Avoid using acid or alkaline products, waxes and/or impregnants. During ordinary cleaning it is recommended to use extremely abrasive items (such as scourers and iron or steel sponges) as little as possible. This recommendation must be adhered to rigorously in the case of tiles with a glossy surface finishing as they are more susceptible to the risk of scuffs, scratches and loss of shine, etc. In the event of heavy dirt or particularly textured surfaces, use an alkaline detergent and rinse after washing. For large surfaces, the use of a floor washing machine is recommended. During every-day cleaning procedures, it is necessary to remember that certain types of dirt (dust, sand) increase the abrasive effect of foot-traffic. Therefore we recommend that you avoid bringing in this type of dirt, which comes in from the outside, by placing a door-mat at the entrance.</p>
calibers (real size)	196,3 mm x 196,3 mm

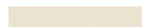


## Colors

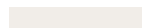
### BIANCO



Bianco



skirting:  
4,7-20 cm  
2"-8"



grout:  
bianco 50



Gira



Estrela



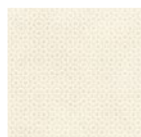
Trama



Prata



Trevo



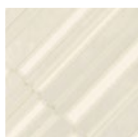
Renda



Flores



Cubo



Diagonal



Combination 9/27

### GRIGIO



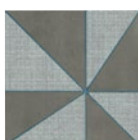
Grigio



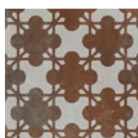
skirting:  
4,7-20 cm  
2"-8"



grout:  
Kerakoll  
Lissoni 6



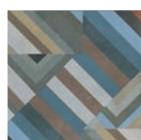
Gira



Estrela



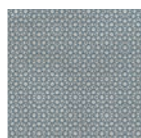
Trama



Prata



Trevo



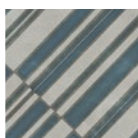
Renda



Flores



Cubo



Diagonal



Combination 9/27

### NERO



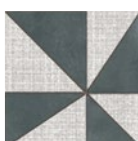
Nero



skirting:  
4,7-20 cm  
2"-8"



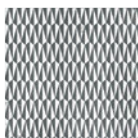
grout:  
black 74



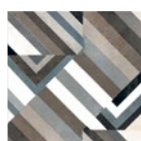
Gira



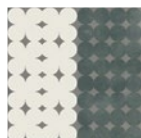
Estrela



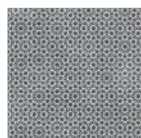
Trama



Prata



Trevo



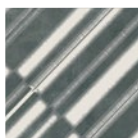
Renda



Flores



Cubo



Diagonal



Combination 9/27

## Technical features

STANDARD	FEATURES	VALUE REQUIRED	AZULEJ
ISO 10545/3 ASTM C373	water absorption	< 0,5% < 0,5%	0,04% 0,04%
ISO 10545/4	breaking strength	Sp> 7,5 min 1300	resistant
EN 101	surface hardness (scala mohs)	> 5	6
ISO 10545/9 ASTM C484	resistance to thermal shock	no visible alteration no samples must show visible defects	resistant unaffected
ISO 10545/12 ASTM C1026	frost resistance	no visible alteration unaffected	resistant unaffected
ISO 10545/13 ASTM C650	resistance to chemical attacks	no visible alteration	resistant unaffected
ISO 10545/14	stains resistance	minimum 3	5
DIN 51130-04	slip resistance	medium values 6÷10° R9 10÷19° R10 19÷27° R11 27÷35° R12 > 35° R13	R9
DIN 51097		–	–
DCOF		> 0,42	0,62
B.C.R.		–	0,52
LEED CERTIFICATION 4.1			8,6% Bianco - 15,8% Grigio - 15,8% Nero
ENVIRONMENTAL MANAGEMENT SYSTEM ISO 14001 : 2004			
VOC EMISSION			available upon request
DECLARATION OF CONTENTS			available upon request
SDS			available upon request
EPD			available upon request
BPD3			available upon request
HPD			available upon request

## Packing

SIZE	PCS-SQM	PCS-BOX	SQM-BOX	BOX-PAL	KG-BOX	KG-PAL	SQM-PAL
20-20 cm	25	24	0,96	72	20,95	1508,00	69,12
pattern 20-20 cm	25	24	0,96	72	20,95	1508,00	69,12
combination 20-20 cm	25	27	1,08	48	23,45	1126,00	51,84
skirting 4,7-20 cm	–	10	2,00 ml	–	2,15	–	–